



Network

Dome

# QND-7010R

4M H.265 IR Dome Camera



## Key Features

- Max. 4M resolution
- Built-in 2.8mm fixed lens
- Max. 20fps@4M, Max. 30fps@under 2M (H.265/H.264)
- H.265, H.264, MJPEG codec supported, Multiple streaming
- Motion detection, Tampering, Defocus detection
- microSD (128GB) memory slot, PoE / 12V DC
- IR viewable length 20m, IK08
- Hallway view, WiseStream support
- LDC support (Lens Distortion Correction)

## Compatible Accessories (Optional)



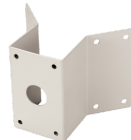
SBP-300CM



SBP-120WM



SBP-300PM



SBP-300KM



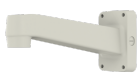
SBP-300WM1



SPB-IND12



SBP-300LM



SBP-390WM2



SPG-IND12B



SBP-300WM



SBP-300B



SBP-300HM7



SBP-300NB

# QND-7010R

4M H.265 IR Dome Camera



## Specifications

Video	
Imaging Device	1/3" 4MP CMOS
Resolution	2592x1520, 2560x1440, 2304x1296, 1920x1080, 1280x1024, 1280x960, 1280x720, 1024x768, 800x600, 800x448, 720x576, 720x480, 640x480, 640x360, 320x240
Max. Framerate	H.265/H.264: Max. 20fps@4MP, Max. 30fps/25fps(60Hz/50Hz) 2MP, all resolution, MJPEG: Max 15fps/12fps(60Hz/50Hz)
Min. Illumination	Color: 0.5Lux(F2.2, 1/30sec) BW: 0Lux(IR LED on)
Lens	
Focal Length (Zoom Ratio)	2.8mm fixed focal
Max. Aperture Ratio	F2.2
Angular Field of View	H: 110.0° / V: 63.0° / D: 128.0°
Focus Control	Fixed
Pan / Tilt / Rotate	
Pan / Tilt / Rotate Range	0°~350° / 0°~67° / 0°~355°
Operational	
Camera Title	Displayed up to 20 characters per line(Max.5 lines)
Day & Night	Auto(ICR)
Backlight Compensation	BLC, WDR, SSSR
Wide Dynamic Range	120dB
Digital Noise Reduction	SSNR
Motion Detection	4ea, polygonal zones
Privacy Masking	6ea, rectangular zones
Gain Control	Low / Middle / High
White Balance	ATW / AWC / Manual / Indoor / Outdoor
LDC	Support
Electronic Shutter Speed	Minimum / Maximum / Anti flicker
Video Rotation	Flip, Mirror, Hallway view(90°/270°)
Analytics	Defocus detection, Motion detection, Tampering
Alarm I/O	Input 1ea / Output 1ea
Alarm Triggers	Analytics, Network disconnect, Alarm input
Alarm Events	File upload via FTP and e-mail Notification via e-mail SD/SDHC/SDXC or NAS recording at event triggers Alarm output
Audio In	Built-in mic
IR Viewable Length	20m(65.62ft)

Design and specifications are subject to change without notice. The latest product information / specification can be found at [HanwhaVision.com](http://HanwhaVision.com).

Hanwha Vision is formerly known as Hanwha Techwin.

Network	
Ethernet	RJ-45(10/100BASE-T)
Video Compression	H.265/H.264, MJPEG
Audio Compression	G.711 u-law /G.726 Selectable G.726(ADPCM) 8KHz, G.711 8KHz G.726: 16Kbps, 24Kbps, 32Kbps, 40Kbps
Smart Codec	WiseStream I
Bitrate Control	H.264/H.265: CBR or VBR MJPEG: VBR
Streaming	Unicast(6 users) / Multicast Multiple streaming(Up to 3 profiles)
Protocol	IPv4, IPv6, TCP/IP, UDP/IP, RTP(UDP), RTP(TCP), RTCP, RTSP, NTP, HTTP, HTTPS, SSL/TLS, DHCP, FTP, SMTP, ICMP, IGMP, SNMPv1/v2c/v3(MIB-2), ARP, DNS, DDNS, QoS, PIM-SM, UPnP, Bonjour
Security	HTTPS(SSL) Login Authentication Digest Login Authentication IP Address Filtering User access log 802.1X Authentication(EAP-TLS, EAP-LEAP)
Application Programming Interface	ONVIF Profile S/G SUNAPI(HTTP API)

General	
Web Viewer	Supported OS: Windows 7, 8.1, 10, Mac OS X 10.10, 10.11, 10.12 Recommended Browser: Google Chrome Supported Browser: MS Explorer11, MS Edge, Mozilla Firefox(Windows 64bit only), Apple Safari(Mac OS X only)
Edge Storage	Micro SD/SDHC/SDXC 1slot 128GB
Memory	512MB RAM, 256MB Flash

Environmental & Electrical	
Operating Temperature / Humidity	-10°C ~ +55°C(14°F ~ +131°F) / Less than 90% RH
Storage Temperature / Humidity	-30°C ~ +60°C(-22°F ~ +140°F) / Less than 90% RH
Certification	IK08
Input Voltage	PoE(IEEE802.3af, Class3), 12VDC
Power Consumption	PoE: Max 7.00W 12VDC: Max 5.80W

Mechanical	
Color / Material	Ivory / Plastic
Product Dimensions / Weight	Ø110.0x86.0mm(Ø4.33x3.39"), 290g(0.64 lb)

# QND-7010R

4M H.265 IR Dome Camera

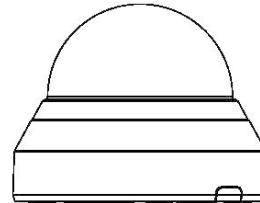
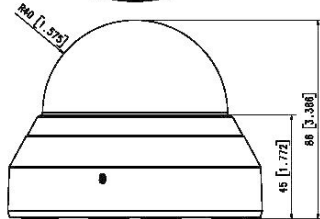
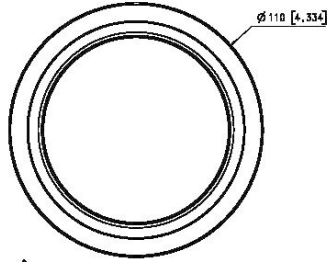


CAD

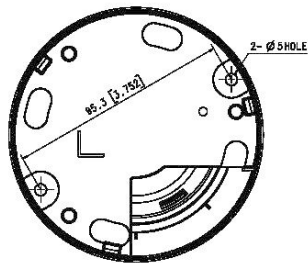
Unit:mm [inch]

This parts should not contain any substances which are specified in SVHC-7981-816

NO	PART NAME	CODE NO.	MATERIAL	QTY	REMARK
1	FINAL ASSY QND SERIES	618788	MATERIAL	1	REMARK



Unit:mm [inch]



EXP. CHANGE

UNIT	MM	DESIGN	CHECK	APPROVAL	PART NAME	FINAL ASSY QND SERIES
SCALE	1/1	14.10.20			MODEL NAME	QND SERIES
		SAMSUNG TECHWIN		CODE NO.	-	