



Network

Dome

# QNV-8020R

5M H.265 IR Dome Camera



## Key Features

- Max. 5Megapixel (2592 x 1944) resolution
- 4mm fixed lens
- 0.15Lux (Color), 0Lux (B/W, IR LED on)
- H.265, H.264, MJPEG codec support, Multiple streaming
- Day&Night (ICR), WDR (120dB)
- Tampering, Motion detection, Defocus detection
- Micro SD / SDHC / SDXC memory slot (Max. 128GB)
- Hallway view, WiseStream II support
- IR Viewable length 25m (82.02ft)
- IP66, IK10, PoE

## Compatible Accessories (Optional)



SBP-300LMW



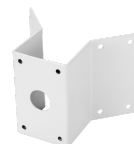
SBV-120WCW



SPB-VAW12



SBP-300MMW1



SBP-300KMW



SBP-300BW



SBP-122HMMW



SBV-120GW



SBP-300PMW



SBP-300MMW



SBP-137MMW1



SBP-300NBW



SBP-300CMW

# QNV-8020R

5M H.265 IR Dome Camera



## Specifications

| Video                     |  |
|---------------------------|--|
| Imaging Device            | 1/2.8" CMOS  |
| Resolution                | 5MP mode : 2592x1944, 1920x1080, 1280x960, 1280x720, 800x600, 800x448, 720x576, 720x480, 640x480, 640x360, 320x240<br>4MP mode : 2560x1440, 1920x1080, 1280x960, 1280x720, 800x600, 800x448, 720x576, 720x480, 640x480, 640x360, 320x240 |
| Max. Framerate            | H.265/H.264: Max. 30fps/25fps(60Hz/50Hz)<br>MJPEG: Max. 15fps(@5MP Max. 2fps)  |
| Min. Illumination         | Color: 0.15Lux(F1.6, 1/30sec, 30IRE)<br>BW: 0.015Lux(F1.6, 1/30sec, 30IRE), 0Lux(IR LED on)  |
| Video Out                 | CVBS: 1.0 Vp-p / 75Ω composite, 720x480(N), 720x576(P) for installation  |
| Lens                      |  |
| Focal Length (Zoom Ratio) | 4.0mm fixed focal  |
| Max. Aperture Ratio       | F1.6   |
| Angular Field of View     | H: 80°/ V: 59°/ D: 106°  |
| Focus Control             | Fixed  |
| Pan / Tilt / Rotate       |  |
| Pan / Tilt / Rotate Range | 0°~350° / 0°~67° / 0°~355°   |
| Operational               |  |
| Camera Title              | Displayed up to 85 characters  |
| Day & Night               | Auto(ICR)  |
| Backlight Compensation    | BLC, WDR, SDR  |
| Wide Dynamic Range        | 120dB  |
| Digital Noise Reduction   | SSNR   |
| Motion Detection          | 4ea, polygonal zones   |
| Privacy Masking           | 6ea, rectangular zones   |
| Gain Control              | Low / Middle / High  |
| White Balance             | ATW / AWC / Manual / Indoor / Outdoor  |
| LDC                       | Support  |
| Electronic Shutter Speed  | Minimum / Maximum / Anti flicker (1/5~1/12,000sec)   |
| Video Rotation            | Flip, Mirror, Hallway view(90°/270°)   |
| Analytics                 | Motion detection, Tampering, Defocus detection, Virtual area(Intrusion/Enter/Exit), Virtual line(Crossing/Direction)   |
| Alarm I/O                 | Input 1ea / Output 1ea   |
| Alarm Triggers            | Analytics, Network disconnect, Alarm input   |

## QNV-8020R

|                                       |   |
|---------------------------------------|---|
| Alarm Events                          | When alarm trigger occurred<br>- File upload(image): e-mail/FTP<br>- Notification: e-mail<br>- Recording: SD/SDHC/SDXC or NAS recording at event triggers<br>- Alarm output<br>- Handover: PTZ preset |
| Light Type                            | IR LED (850nm)  |
| Light Viewable Length                 | 25m(82.02ft)  |
| <b>Network</b>                        |   |
| Ethernet                              | RJ-45(10/100BASE-T)   |
| Video Compression                     | H.265/H.264: Main/High, MJPEG   |
| Smart Codec                           | WiseStream II   |
| Bitrate Control                       | H.264/H.265: CBR or VBR<br>MJPEG: VBR   |
| Streaming                             | Unicast(6 users) / Multicast<br>Multiple streaming(Up to 3 profiles)  |
| Protocol                              | IPv4, IPv6, TCP/IP, UDP/IP, RTP(UDP), RTP(TCP), RTCP, RTSP, NTP, HTTP, HTTPS, SSL/TLS, DHCP, FTP, SMTP, ICMP, IGMP, SNMPv1/v2c/v3(MIB-2), ARP, DNS, DDNS, QoS, UPnP, Bonjour, LLDP                    |
| Application Programming Interface     | ONVIF Profile S/G/T<br>SUNAPI(HTTP API)<br>Wisenet open platform  |
| <b>Security</b>                       |   |
| OS / Firmware Protect                 | Firmware encryption   |
| User authentication                   | Digest Authentication, Prevent brute-force attack   |
| Network authentication                | 802.1X Authentication(EAP-TLS, EAP-LEAP, EAP-PEAP MSCHAPv2)   |
| Secure Communication                  | HTTPS, SRTP, WSS(Websocket secure)  |
| Access Control                        | Access control based on IP address  |
| Data Protect                          | Authentication information encryption, ZIP compression encryption   |
| Audit                                 | User Access/System/Event log management   |
| Device ID                             | Device Certificate(Hanwha Private Root CA)  |
| Secure Storage                        | SDcard partition encrypt  |
| <b>General</b>                        |   |
| Webpage Language                      | English, Korean, Chinese, French, Italian, Spanish, German, Japanese, Russian, Portuguese, Czech, Polish, Turkish, Dutch  |
| Edge Storage                          | Micro SD/SDHC/SDXC 1slot 128GB  |
| Memory                                | 512MB RAM, 256MB Flash  |
| <b>Environmental &amp; Electrical</b> |   |
| Operating Temperature / Humidity      | -30°C~+55°C(-22°F~+131°F) / 0~90% RH(non-condensing)<br>* Start up should be done at above -20°C  |
| Storage Temperature / Humidity        | -30°C~+60°C(-22°F~+140°F) / 0~90% RH  |
| Certification                         | IP66, IK10  |
| Input Voltage                         | PoE(IEEE802.3af, Class3)  |
| Power Consumption                     | PoE: Max 7.20W, typical 5.40W   |
| <b>Mechanical</b>                     |   |
| Color / Material                      | White / Aluminum  |
| RAL Code                              | RAL9003   |
| Product Dimensions / Weight           | ø120.3x91.7mm(ø4.74x3.61"), 510g(1.12 lb)   |
| Hanging Mount (Dome)                  | SBP-122HMW  |

Design and specifications are subject to change without notice. The latest product information / specification can be found at [HanwhaVision.com](http://HanwhaVision.com).

Hanwha Vision is formerly known as Hanwha Techwin.

|                           |                 |
|---------------------------|-----------------|
| Backbox                   | SBV-120GW       |
| DORI (EN62676-4 standard) |                 |
| Detect (25PPM/ 8PPF)      | 62.0m(203.39ft) |
| Observe (63PPM/ 19PPF)    | 24.8m(81.36ft)  |
| Recognize (125PPM/ 38PPF) | 12.4m(40.68ft)  |
| Identify (250PPM/ 76PPF)  | 6.2m(20.34ft)   |

# QNV-8020R

5M H.265 IR Dome Camera

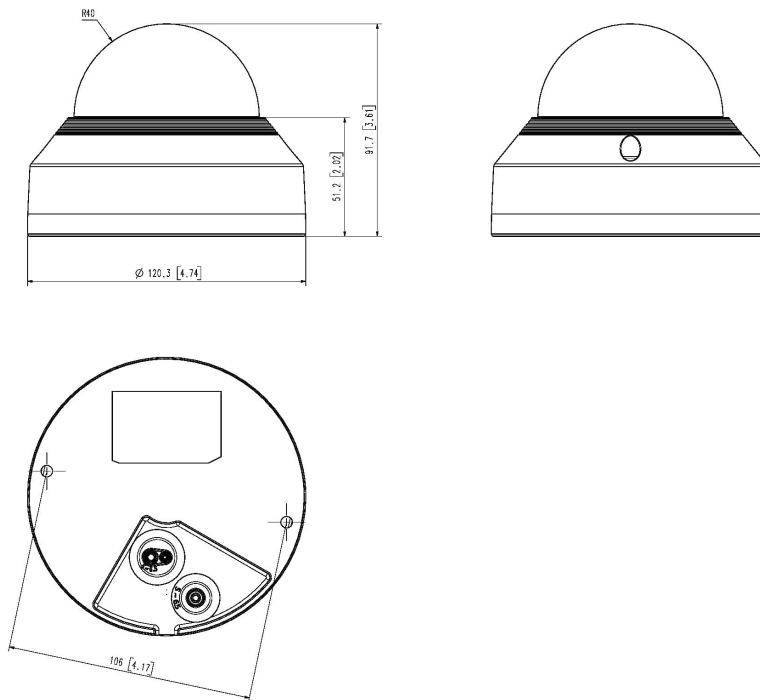


## CAD

Unit:mm [inch]

This parts should not contain any substances which are specified in AHS0-0033K

| NO | PART NAME            | CODE NO. | MATERIAL | Q'TY | REMARK |
|----|----------------------|----------|----------|------|--------|
| 1  | FINAL_ASSY_SNVL8015R | 036400   | MATERIAL | 1    | REMARK |



A2  
CHANGE

| UNIT  | mm  | DESIGN   | CHECK    | APPROVAL | PART NAME  | FINAL_ASSY_SNVL8015R |
|-------|-----|----------|----------|----------|------------|----------------------|
| SCALE | 1/1 | Design   | Check    | Approval | MODEL NAME | MODEL NAME           |
|       |     | 15.08.01 | 15.08.01 | 15.08.01 |            |                      |
|       |     |          |          |          | CODE NO.   | 036400               |