



Network

Fisheye

# XNF-9010RS

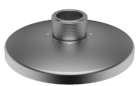
Stainless IR Fisheye Camera



## Key Features

- 1/2.3" 12MP CMOS
- 1.08mm fixed focal lens
- Stereo graphic type lens - enhanced resolution for the peripheral regions
- H.265, H.264, MJPEG codec supported
- Fisheye, Single panorama, Double panorama, Quad view
- On board dewarping, Digital PTZ
- extreme WDR (120dB), WiseStream II support
- Wise IR - IR viewable length 8m (26.25ft)
- Virtual channel support
- Plugin support, selectable I/O port
- Video Analytics, Heatmap, People counting
- Queue management
- Stainless Steel
- Motion detection, Handover
- IP66, IP67, IP6K9K, NEMA4X, IK10, IK10+ (it can resist impacts of 40 joules), NSF/ANSI Standard 169 - Special Purpose Food Equipment and Devices

## Compatible Accessories (Optional)



SBP-300HMS6



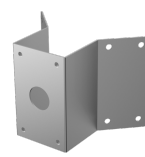
SBP-300WMS1



SBP-300WMS



SBP-300PMS



SBP-300KMS

# XNF-9010RS

## Stainless IR Fisheye Camera



### Specifications

| Video                     |  |
|---------------------------|--|
| Imaging Device            | 1/2.3" CMOS  |
| Resolution                | Original view(1:1): 3008x3008~480x480<br>Double panorama(2:1): 3584x1792~640x320<br>Single panorama(4:1): 3584x896~640x160<br>Quad view: 3584x2688~640x480<br>Q1/Q2/Q3/Q4(4:3): 1792x1344~640x480                          |
| Max. Framerate            | H.265/H.264:<br>Original view-Max. 30fps/25fps@3008x3008(60Hz/50Hz),<br>Double panorama-Max. 30fps/25fps@3584x1792(60Hz/50Hz)<br>Single panorama-Max. 30fps/25fps@3584x896(60Hz/50Hz)<br>MJPEG: Max. 30fps(@9MP Max. 5fps) |
| Min. Illumination         | Color: 0.39Lux(F2.2, 1/30sec, 30IRE)<br>BW: 0Lux(IR LED on)  |
| Video Out                 | CVBS: 1.0 Vp-p / 75Ω composite, 720x480(N), 720x576(P), for Installation<br>USB: Micro USB Type B, 1280x720 for installation   |
| Lens                      |  |
| Focal Length (Zoom Ratio) | 1.08mm fixed focal   |
| Max. Aperture Ratio       | F2.2   |
| Angular Field of View     | H: 187° / V: 187° / D: 187°  |
| Min. Object Distance      | 0.5m(1.64ft)   |
| Focus Control             | Simple focus   |
| Operational               |  |
| Camera Title              | Displayed up to 85 characters  |
| Day & Night               | Auto(ICR)  |
| Backlight Compensation    | BLC, HLC, WDR, SSSDR   |
| Wide Dynamic Range        | extremeWDR(120dB)  |
| Digital Noise Reduction   | SSNR V   |
| Motion Detection          | 8ea, 8point Polygonal zones  |
| Privacy Masking           | 32ea, 4point Quadrangle zones<br>- Color: Gray/Green/Red/Blue/Black/White<br>- Mosaic  |
| Gain Control              | Off / Max Gain / Manual  |
| White Balance             | ATW / NarrowATW / AWC / Manual / Indoor / Outdoor  |
| LDC                       | Support(Fill/stretch mode)   |
| Electronic Shutter Speed  | Minimum / Maximum / Anti flicker(2~1/12,000sec)<br>prefer shutter control  |
| Video Rotation            | Flip, Mirror   |
| Analytics                 | Analytics events<br>- Defocus detection, Directional detection, Motion detection, Appear/Disappear, Enter/Exit, Loitering, Tampering, Virtual line, Audio detection, Sound classification                                  |
| Business Intelligence     | People counting, Queue management, Heatmap   |

Design and specifications are subject to change without notice. The latest product information / specification can be found at [HanwhaVision.com](http://HanwhaVision.com).

Hanwha Vision is formerly known as Hanwha Techwin.

|                    |   |
|--------------------|---|
| Alarm I/O          | 2 configurable I/O ports  |
| Alarm Triggers     | Analytics, Network disconnect, Alarm input, App event, Time schedule, MQTT subscription   |
| Alarm Events       | When alarm trigger occurred<br>- File upload(image): e-mail/FTP/SFTP<br>- File upload(video clip): FTP/SFTP<br>- Notification: e-mail<br>- Recording: SD/SDHC/SDXC or NAS recording at event triggers<br>- Alarm output<br>- Handover: PTZ preset, send message by HTTP/HTTPS/TCP<br>- Audio clip playback<br>- MQTT: publication |
| Audio In           | Selectable(mic in/line in/built-in mic)   |
| Audio Out          | Line out  |
| IR Viewable Length | WiseIR 8m(26.25ft)  |

|                                   |  |
|-----------------------------------|--|
| <b>Network</b>                    |  |
| Ethernet                          | Metal shielded RJ-45(10/100BASE-T)   |
| Video Compression                 | H.265/H.264: Main/Baseline/High, MJPEG   |
| Audio Compression                 | G.711 u-law /G.726 Selectable<br>G.726(ADPCM) 8KHz, G.711 8KHz<br>G.726: 16Kbps, 24Kbps, 32Kbps, 40Kbps<br>AAC-LC: 48Kbps at 16KHz   |
| Smart Codec                       | Manual(5ea area), WiseStream II  |
| Bitrate Control                   | H.264/H.265: CBR or VBR<br>MJPEG: VBR  |
| Streaming                         | Unicast(20 users) / Multicast<br>Multiple streaming(Up to 10 profiles)   |
| Protocol                          | IPv4, IPv6, TCP/IP, UDP/IP, RTP(UDP), RTP(TCP), RTCP, RTSP, NTP, HTTP, HTTPS, SSL/TLS, DHCP, FTP/SFTP, SMTP, ICMP, IGMP, SNMPv1/v2c/v3(MIB-2), ARP, DNS, DDNS, QoS, UPnP, Bonjour, LLDP, CDP, SRTP(TCP, UDP Unicast), MQTT |
| Application Programming Interface | ONVIF Profile S/G/T<br>SUNAPI(HTTP API)<br>Wisenet open platform   |

|                        |   |
|------------------------|---|
| <b>Security</b>        |   |
| OS / Firmware Protect  | Encrypted Firmware, Secure boot, Signed Firmware                        |
| User authentication    | Digest Authenticon, Prevent brute-force attacks                         |
| Network authentication | IEEE 802.1X(EAP-TLS, EAP-LEAP, EAP-PEAP, MSCHAPv2)                      |
| Secure Communication   | HTTPS, WSS(WebSocket Secure), SRTP                                      |
| Access Control         | IP-based access control   |
| Data Protect           | Encryption Credentials, Encrypt compress for live recording file export |
| Audit                  | Access / System / Event Log management                                  |
| Device ID              | Device certificate(Hanwha Vision Root CA)                               |
| Secure Storage         | HTPM(Hanwha trusted platform module), SDcard partition encrypt          |

|                  |  |
|------------------|--|
| <b>General</b>   |  |
| Webpage Language | English, Korean, Chinese, French, Italian, Spanish, German, Japanese, Russian, Portuguese, Czech, Polish, Turkish, Dutch, Hungarian, Greek |
| Edge Storage     | Micro SD/SDHC/SDXC 2slot Max. 1TB(512GBx2)   |
| Memory           | 4GB RAM, 512MB Flash   |

|                                       |   |
|---------------------------------------|---|
| <b>Environmental &amp; Electrical</b> |   |
| Operating Temperature / Humidity      | -40°C~+50°C(-40°F~+122°F) / 0~95% RH(non-condensing)  |
| Storage Temperature / Humidity        | -50°C~+60°C(-58°F~+140°F) / 0~90% RH  |
| Certification                         | IP66/IP67, IP6K9K, NEMA4X, IK10+<br>NSF/ANSI Standard 169 – Special Purpose Food Equipment and Devices. |

Design and specifications are subject to change without notice. The latest product information / specification can be found at [HanwhaVision.com](http://HanwhaVision.com).

Hanwha Vision is formerly known as Hanwha Techwin.

## XNF-9010RS

|                   |  |
|-------------------|--|
| Input Voltage     | PoE(IEEE802.3af, class3), 12VDC                              |
| Power Consumption | PoE: Max 12.95W, typical 11W<br>12VDC: Max 11W, typical 9.1W |

### Mechanical

|                                   |   |
|-----------------------------------|---|
| Color / Material                  | Silver / Stainless(SUS316L)<br>Bubble: Nylon dome |
| Product Dimensions / Weight       | ø167.9x72.1mm(ø6.61x2.84"), 2980g(6.57 lb)        |
| Compatible Conduit hole / Gangbox | single, double, 4" octagon, 4" square             |
| Hanging Mount (Dome)              | SBP-300HMS6                                       |
| Wall Mount                        | SBP-300WMS/WMS1                                   |
| Pole Mount                        | SBP-300PMS  |
| Corner Mount                      | SBP-300KMS  |

### Certifications & Standards

|             |  |
|-------------|--|
| EMC         | FCC 47 CFR 15 Subpart B Class A<br>ICES-3(A)/NMB-3(A)<br>CE/UKCA<br>- EN 55032 Class A, EN 50130-4, EN 61000-3-2, EN 61000-3-3<br>VCCI CISPR 32 Class A<br>RCM AS/NZS CISPR 32 Class A<br>KS C 9832 Class A, KS C 9835 |
| Safety      | UL 62368-1, CAN/CSA C22.2 NO. 62368-1<br>IEC 62471   |
| Environment | EN IEC 63000<br>IEC 60529 IP66/IP67, ISO 20653 IP6K9K, IEC 62262 IK10+<br>NEMA 250 type 4X<br>NSF/ANSI Standard 169  |

### DORI (EN62676-4 standard)

|                           |                 |
|---------------------------|-----------------|
| Detect (25PPM/ 8PPF)      | 34.9m(114.49ft) |
| Observe (63PPM/ 19PPF)    | 13.9m(45.60ft)  |
| Recognize (125PPM/ 38PPF) | 7.0m(22.96ft)   |
| Identify (250PPM/ 76PPF)  | 3.5m(11.48ft)   |

# XNF-9010RS

Stainless IR Fisheye Camera



CAD

Unit:mm [inch]

